

Gusangiza inyandiko(Share documents) hagati ya mudasobwa ebyiri kubantu biremereye cyane

Ubusanzwe dusanzwe tumenyereye ko duhererekanya ibintu hagati ya mudasobwa cyangwa computer ebyiri(2) twifashishije flash disk(furashe) cyangwa memory card(memori cadi). Ariko hari ubundi buryo bwinshi dushobora gukoresha bwiza kandi bwihuta kurusha ubwo.

Kuyu muni twifashishije isomo rya network tugiye kubasobanurira bumwe muribwo bukaba bukorwa wifashishije umugozi wa network. Wasanga uri kwibaza uti ko nta murandasi ikoresheje umugozi ngira ubwo se nange nabikora?

Wihangayika!! Gukorasha ubu buryo ntabwo bigombera kuba ufite murandasi.

Impamvu ububuryo ari bwiza kurusha ubundi

1. Ntibugombera murandasi(network)/
2. Ushobora gukura ibintu biremereye kuri mudasobwa imwe ubishyira kuyindi niyo ibyo bintu byaba biremereye cyane. Urugero birengeje 50Gb
3. Burihuta ugerenyeje n'ubundi buryo bushobora kwifashishwa. Ngaho tekereza uramutse ufite 100Gb ushaka gukura kuri mudasobwa imwe ujyana kuyindi, kandi ufite flash disk ya 8Gb. Urumva wakora copy incuro zingahe? Mugihe kingana gite?

Usabwa iki kugirango ukoreshe ubu buryo?

1. Mugozi wa network witwa “ crossover network cable”

Kanda aha usome byinshi kuri uyu mugozi:

Crossover Network cable

Ubusanzwe imigozi ya network iba muburyo bubiri(2) dusanzwe tumenyereye uretseko aha twakongeraho na fiber cable, ariko iyo tuvuze gutya tuba tuvuze uko ikoze aho irangirira mbese (connectors) zayo kuko ubwoko bw'imigizi ikoresheya muri network ni bwinshi;

Ubwambere: Crossover Network cable, kabiri: Straight Through cable.

Ubu turakubwira kumugozi ukoze kuburyo bwa crossover cable kubera ariwo wifashishwa muri iki gikorwa. Tuzabasobanurira aho iyo migozi itandukaniye nicyo ikoresheya.

Mugozi wa Crossover ukoresheya muguhuza mudasobwa ebyiri(2) ukaba utandukanye cyane n'uriya dukoresheya kuri murandasi y'umugozi.

Tubisubiremo iyo tuvuze umugozi wa Crossover tuba tuvuze uburyo connectors zayo(hariya kumutwe uhujije) ntabwo tuba tuvuze ubwoko bw'umugozi ukoze.

Kubera ushobora kubona insinga zakoreshejwe kuri uriya wa murandasi zisa n;izakoreshejwe kuri uyu wa Crossover.

Nituvuga rero umugozi wa Crossover cable ujye uhita w'umva uko imitwe yawo ikozwe, kubera ayo moko abiri akozwe muburyo bubiri butandukanye.

2. Kuba ufite mudasobwa ebyiri(2). Ni ukuvuga iyo ukuraho ibintu bimwe ubijyana kuyindi.

Icyitonderwa: Niba udafite ubu bwoko bwuyu mugozi kandi ukaba uwushaka Twandikire kuri Email yacu cyangwa ugane hafi yawe abasanzwe bakora ibintu bya Network ugure uwo mugozi witwa Crossover network cable.

Bikorwa bite kugirango ukure ibintu bimwe kuri mudasobwa bijya kuyindi.

1. Hindura Ip Address ya musabwa yawe.

Ubusanzwe kugirango ukoreshe murandasi ni uko mudasobwa yawe ihabwa icyo twita IP Address twagereranya ni cyiyiranga iyo iri kuri murandasi, ariko iyi IP mudasobwa iyibona muburyo butagusabye kuyandikamo. Iyo uyishyize kuri murandasi ihita iyifata ako kanya.

Ubu noneho tugiye gukora Network yacu tudahuriyeho nabandi bantu, mbese ihuza mudasobwa zacu ebyiri. Aha biragusaba noneho guha mudasobwa yawe IP ari wowe uyanditsemo.

Ugomba kwitonda izi mudasobwa zose ukaziha IP Address zijya gusa ikindi kandi Subnet mask zigomba kuba zisa. Humura turabikwereka ku mafoto.

Urugero:

Kugira ngo wandikemo IP zawe wishakiye ugomba kubanza ukemeza ahanditse “Use the following IP address” Hanyuma ubone kwemezamo izawe;

Kuri mudasobwa yambere ushobora gukoresha IP Address: 192.168.1.2

Naho kuya kabiri ugakoresha IP Address: 192.168.1.3

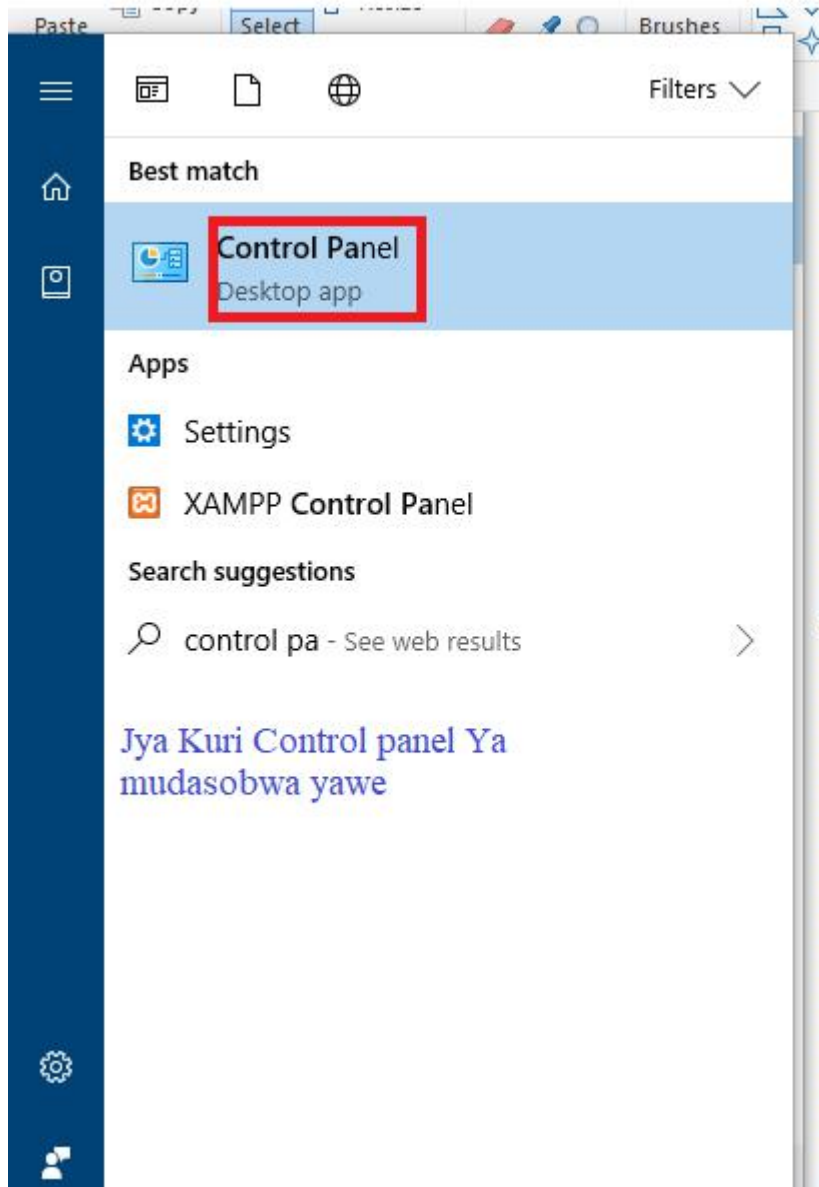
Kuri subnet mask ugomba gukoresha address zisa hose, ubwo wakoresha;

255.255.255.0 uyu mubare ugomba kuba umeze gutya, tuzagusobanurira impamvu kwiyinshuro ugomba kuba umeze utya n’igihe wawuhindurira n’uko wawuhindura.

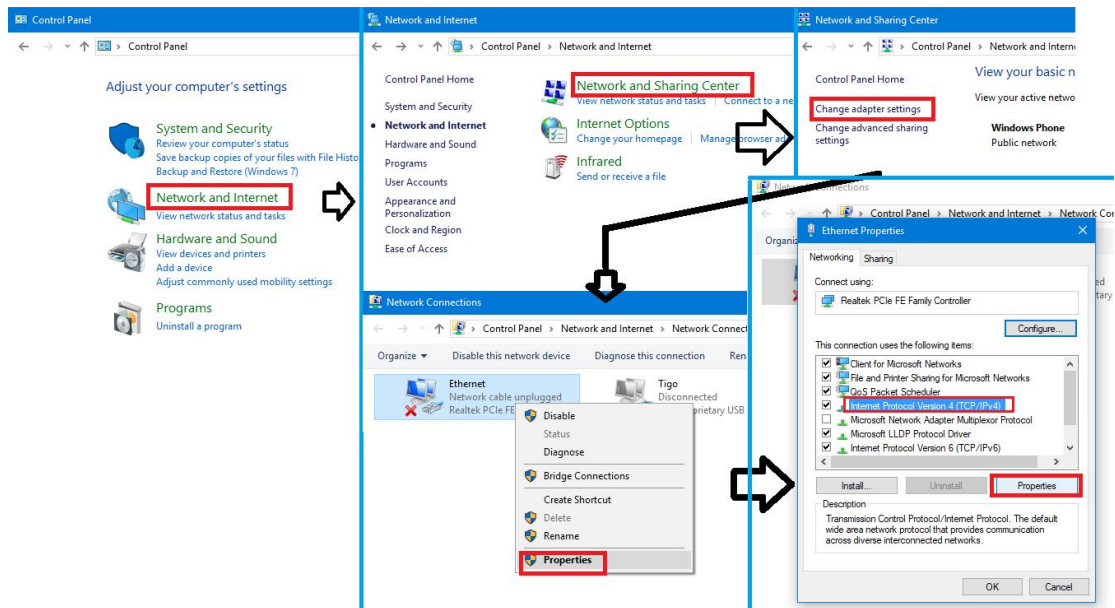
Ikindi cya nyuma default date aha wakandika 192.168.1.1 kuri mudasobwa zose.

Kugira ngo ubone aho uzandikiramo.

Andika muri search yawe cyangwa ujye kuri **Control panel** ya mudasobwa.

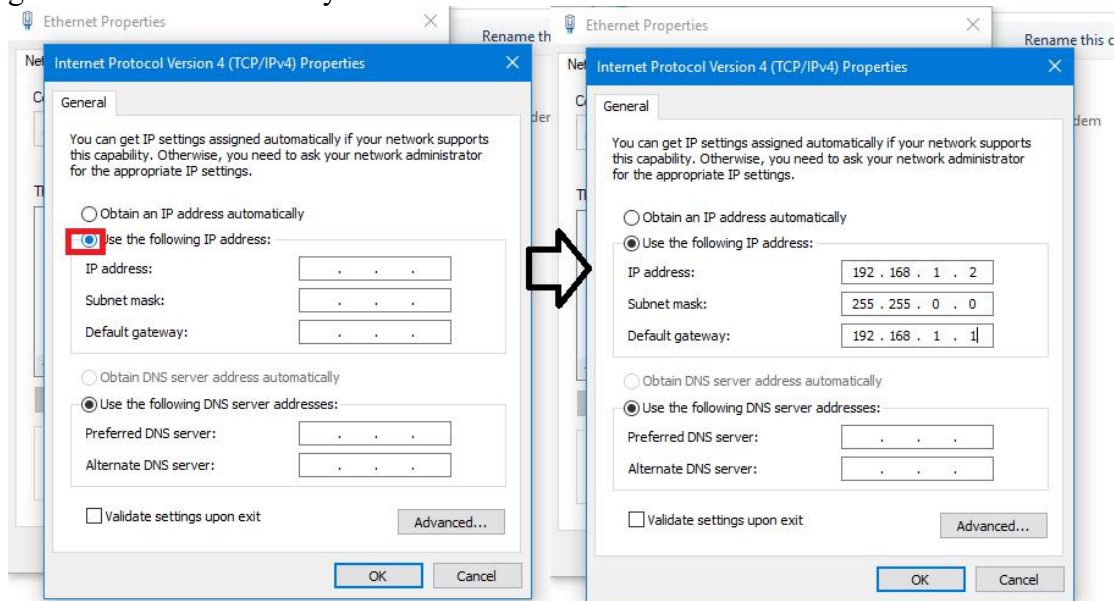


Jya kuri **CONTROL SETTING** hanyuma ukuri kize iyo nzira ubona kuri iyo foto.



Network and internet>> Network and sharing center>> change adapter settings>> Ethernet>> properties>> Internet protocol version 4>> properties

Urabona table isa gutya akaba ariyo uri buze kuzuzamo za IP Address zawe. Wibuke gukura kuri automatically



Kora ibi no kuyindi mudasobwa.

Wawwooo!!!! Niba wakoze neza ibyo twakubwiye ubu mudasobwa zawe zishobora gutangira kohererezanya ibintu. Ariko mbere yuko tukwereka uko bigenda reka tubanze turebe niba koko mudasobwa zawe zirigushyikirana neza.

Kanda kuri **start** hanyuma wandikemo **CMD**, ubundi ujye kuri command prompt hanyuma ugerageze koherereza ubutumwa kuyindi mudasobwa wifashshije IP Address wayihaye

CA Command Prompt

```
C:\Users\Aseem>ping 192.168.1.1
Pinging 192.168.1.1 with 32 bytes of data:
Reply from 192.168.1.1: bytes=32 time<1ms TTL=64
Reply from 192.168.1.1: bytes=32 time<1ms TTL=64
Reply from 192.168.1.1: bytes=32 time<1ms TTL=64
Reply from 192.168.1.1: bytes=32 time<1ms TTL=64

Ping statistics for 192.168.1.1:
    Packets: Sent = 4, Received = 4, Lost = 0 (0% loss),
    Approximate round trip times in milli-seconds:
        Minimum = 0ms, Maximum = 0ms, Average = 0ms

C:\Users\Aseem>
```

Aho urahindura ukoreshe IP Address ihura na mudasobwa ushaka koherezaho.

Urugero: niba iyo uri gukoreraho wayihaye 192.168.1.3 ushaka kohereza iyo wahaye 192.168.1.2 ubwo aho handitse iyo IP=192.168.1.1 urahashyira 192.168.1.2 hanyuma ukande buto yanditseho "ENTER".

Nubona **Lost = 0 (0% loss)** mudasobwa zawewe ziraba zirigukorana neza uraba ushobora kohereza ibintu biva kuri mudasobwa imwe bijya kuyindi.

Niba ubonye Loss ubwo uraba hari ibyo wishe muri connection yava muguzi wa network uhuza mudasobwa cyangwa configuration twakubwiye gukora wazikoze nabi.

2. Dore uko bohereza ibintu(data)

Ujya kuri folder hanyuma ugakanda ahanditse " **Give access to**" hanyuma ugakora Share.

Izo document wakozeho share indi mudasobwa izibona ahanditse network muri windows explore.

Tukwibutsako ushobora gukura ibintu kuri mudasobwa imwe ubujyana kuyindi bifite Gb nyinshi izo arizo zose.

Niba ugiye kubikura kurimwe ubujyana kuyindi bakakwaka password, biragusabako izo mudasobwa zose zigomba kuba zidafite password hamwe na username cyangwa zose ukaziha Username na password bisa.

Niba ufite ikibazo kuri ibi tumaze kubigisha siga igitekerezo cyawe hasi aha cyangwa utwandikire kuri email yacu turagusubiza bidatinze.

Ushobora nogutanga igitekerezo cyawe kukuntu twazakwigisha ubutaha kukuntu gikorwa cyangwa ugatanga inyunganizi.

Uzuza email yawe ahabugenewe maze ukande Subscriber ujye ubona isomo rishya shya buri uko rigiyeho.